



MAY NEWSLETTER

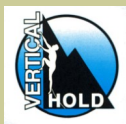
www.alliedclimbers.org

Dedicated to Promoting and Maintaining Access to Climbing and Outdoor Recreation

SPECIAL POINTS OF INTEREST:

- Eagle Peak Preserve Volunteer Trail Day
- Idyllwild Climber's Festival
- Valley of the Moon Clean-up
- Monthly Member Meeting

THANK YOU TO OUR GENEROUS SPONSORS



EAGLE PEAK PRESERVE VOLUNTEER EVENT

ACSD is teaming up with the San Diego Mountain Biking Association (SDMBA) and the San Diego River Park Foundation to work on trails at the Eagle Peak Preserve.

Sunday May 8, 2011 9:00 am

No experience required, and all tools will be provided. Show up with sunscreen, water, a sun hat, and your enthusiasm, and we'll put you to work improving the recreational opportunities and public access to this portion of the San Diego River headwaters. Wildflowers are in bloom and should be beautiful out there. If you have never been to the Eagle Peak Preserve— you should definitely check it out.

Please RSVP or call to set up a carpool: Gary (619) 297-7380



IDYLLWILD CLIMBERS ALLIANCE

Saturday May 14, 2011 Adopt-a-Crag and Climbers Festival

Come out and do some volunteer trail work and then enjoy a barbeque! In the morning volunteers will work on the three main climber's trails in Idyllwild. The Alliance's ambassadors will distribute educational materials to climbers as well as an invitation to attend the barbeque and raffle.

The day will wrap up with a barbeque, book signing by Stonemasters, and raffle.

Idyllwild Climber's Alliance * Access Fund * Southwest Section- American Alpine Club.

Email jlucke@cmc.edu or check out Idyllwild Climber's Alliance Facebook page.

ACSD Merchandise Available at Member Meetings and Events

*Tank Tops * Thongs* Beanies * Hats * SD Pocket Guidebook * T-shirts*

Dedicated to Promoting and Maintaining Access to Climbing and Outdoor Recreation**ACSD 2012 CALENDAR CONTEST!**

ACSD is planning a photo contest for its ACSD 2012 Rock Climbing Calendar. Members are encouraged to submit photos for the calendar to enter the contest and win prizes. The photos must be rock climbing related. The photos must be taken in locations that San Diego climbers typically climb. This includes locations in California, Nevada, Arizona, and Utah. Photographers must be ACSD members to enter the contest. Prizes will be awarded for first, second, and third place.

1st) Cover shot, ACSD T-Shirt or Beanie, ACSD 2012 Calendar

2nd) ACSD T-Shirt or Beanie, ACSD 2012 Calendar

3rd) ACSD 2012 Calendar

ACSD Board and participating photographers will vote on calendar content.

ACSD members will vote on final selections at September ACSD meeting to select the top 3 prize winning images. Prizes will be awarded during the first meeting after the calendars have been printed.

Submission Deadline September 16, 2011. Deadline is subject to change based on the date of the ACSD annual celebration. Entrants are encouraged to submit work at any time before the deadline.

Calendar submissions must follow the following quality standards and criteria:

- * Vertical format. Images will be printed 11X8.5.
- * Images must have resolution of 2640 X 2040 Pixels or greater (about 6 MP).
- * All images submitted must be in final form. Low resolution images or images that require Photoshop work will not be accepted.
- * Include your name in the file name. Also submit information including Climber, Crag, Route Name, and Difficulty.

All final selections must have photographer and model approval for ACSD usage. This may be provided after final calendar down-select has occurred.

Please submit entries to alliedclimbers@gmail.com. There is no limit to entries but we ask that you send us only your best photos that you will be proud to have displayed in the 2012 ACSD Rock Climbing Calendar.

VALLEY OF THE MOON CLEAN-UP

ACSD is partnering with the Bureau of Land Management (BLM) for a volunteer event at Valley of the Moon on Saturday May 21, 2011. This event will be focused on cleaning up trash and trail/road work as necessary.

If you have never been to Valley, this is a great opportunity! You may be able to catch a 4*4 ride into the Valley for some climbing afterwards!

Bring gloves, hat, boots, something for potluck and don't forget your climbing gear for the afternoon!

Saturday May 21, 2011 8:30 am

Where: Valley of the Moon, In-Ko-Pah exit of I-8

For more information contact Mallory at volunteer@alliedclimbers.org or call Joe Brophy (619)667-5213



Dedicated to Promoting and Maintaining Access to Climbing and Outdoor Recreation

SEASONAL RAPTOR NESTING CLOSURES

Seasonal Nesting Closures are in effect at 5 of our local climbing areas: Eagle Peak, Corte Madera, Glenn Cliff, Gower Mountain, and Ramona Wall at Poway Crags.

Thanks to everyone for continuing to respect all closures.

Eagle Peak: All summit routes and routes on the Main Wall west of 'Direct Route' are closed to all recreation. Please visit the [Cleveland National Forest](#) webpage for more information on Eagle Peak.

Corte Madera: The west side of the main wall is closed to climbing. Please visit the [Cleveland National Forest](#) webpage for more information on Corte Madera.

Glenn Cliff: The entire climbing area and a buffer around the cliff are closed to all recreation. Please visit the [Cleveland National Forest](#) webpage for more information on Glenn Cliff.

Gower Mountain: The Gower Mountain closure includes the climbing area "Shangri La" as described in Chris Hubbard's [Climbing Topos of San Diego](#). Please visit the [Cleveland National Forest](#) webpage for more information on Gower Mountain.

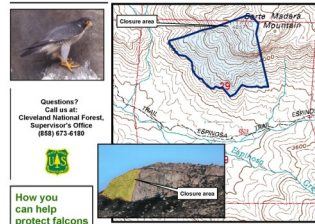
Poway Crags: The Miller Time crag and Ramona Wall are currently closed. Eagles are actively nesting in the area and it is imperative that we all honor the seasonal (Dec-15 to Aug-31) closure that allows us to enjoy this crag outside of the nesting season. Please visit [ACSD's](#) webpage for more information of the seasonal closure at Poway Crags.

Thank you for respecting closures and helping to protect these amazing birds that we share the cliffs with!

Please look for signs such as the one shown to the right posted at our local crags.

Attention! Help protect your wildlife.

To protect nesting peregrine falcons, the Corte Madera Mountain area, as shown below, is closed to hiking and climbing through July 31. This includes all climbing routes west of route 1646 as shown on page 156 of the San Diego County Climbing Guide (Kennedy and Hubbard 2006), including South Buttress, and all formations west of South Buttress.



Cliffs provide critical breeding habitat for falcons. Human disturbance may cause falcons to abandon their nests and may result in offspring dying. Avoid these sensitive nesting areas to protect falcons. If you would like to learn more about these birds of prey, please visit the Cleveland NF website at: <http://www.fs.fed.us/r5/cleveland>

ACSD MONTHLY MEMBER MEETING

Tuesday, May 31, 2011— 6pm Dinner, 7 pm Meeting

Callahan's Pub and Brewery. 8111 Mira Mesa Blvd

ACSD member event giving you a chance to support climbing in San Diego.

Dedicated to Promoting and Maintaining Access to Climbing and Outdoor Recreation

OVER THE EDGE FOR K.I.T.

On August 20, 2011 the west coast's tallest waterfront building will once again be the setting for the 3rd annual fundraising event that challenged and inspired **Southern California: [Over the Edge for KIT](#)**. Experience a breathtaking 360 view from the top of San Diego and push yourself to the limit by rappelling from the 33rd story of the spectacular Manchester Grand Hyatt San Diego. The rappel begins at 8AM for participants, descending a height of approximately 357 feet in roughly 10 minutes from the hotel's Harbor tower. Friends, family and supporters can cheer on participants from the poolside Landing Party, featuring food, music, games and family-friendly entertainment. Funds raised support Kids Included Together (KIT), a San Diego based non-profit that supports recreational, child development, and youth development programs that include children with and without disabilities.

If you are interested in participating as a volunteer from ACSD (and rappelling 33 stories straight down), Please contact Angie Egner at treasurer@alliedclimbers.org

